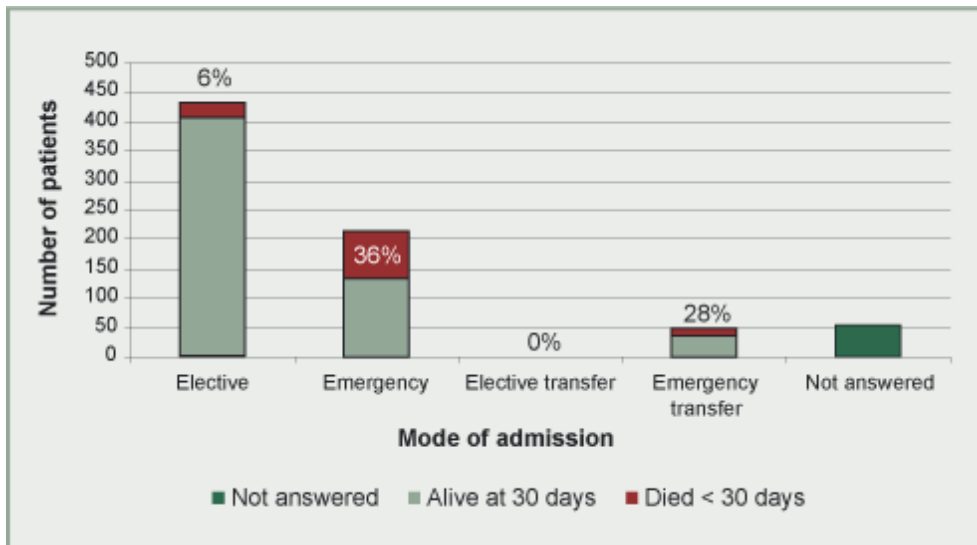


## 4. Surgery

### Mode of admission



**Figure 1.** Mode of admission by outcome  $n=752$ . Percentages refer to patients who died in hospital within 30 days.

Data on mode of admission and 30 day mortality were examined for 752 patients who had an open AAA repair (Figure 1). These data exclude patients who did not undergo operation but received palliative care only (79) and patients who had an endovascular repair (53). These two groups of patients are considered separately.

Just under a third (31%, 214/698) were direct emergency admissions and a further 50 patients were emergency transfers (admissions that had been transferred in from another hospital). Compared to the mortality rate for elective admission for AAA repair of 6.2% (27/434), the mortality rate after an emergency admission was six times higher at 36% (94/264). Because of the expected but dramatic difference in outcome between these two groups they have been analysed separately.

Denominator data may differ between sections according to the completeness of data returned.